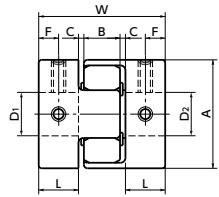
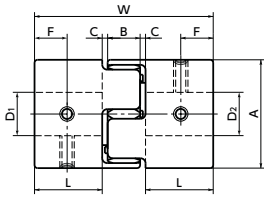
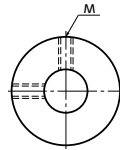


# MJC 挠性联轴器 - 梅花型 - 定位螺丝固定型

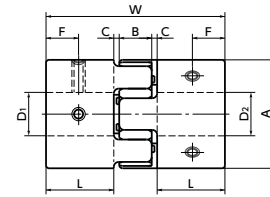
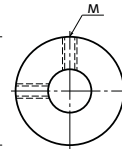
选型指南 | CAD Download | 高扭矩 | 减振 | 电绝缘性



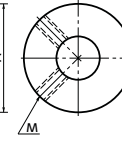
外径 φ14-φ30



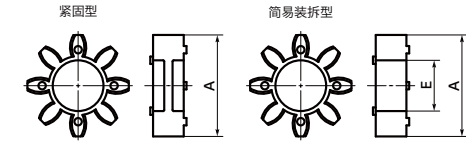
外径 φ40



外径 φ55-φ95



### ● 弹性间隔体详图



### ● 环境温度、温度修正系数

环境温度	温度修正系数
-20°C~30°C	1.00
30°C~40°C	0.80
40°C~60°C	0.70

## 尺寸

单位: mm

型号	A	L	W	B	C*1	弹性间隔体 E	F	M	螺丝紧固扭矩 (N·m)
MJC-14	14	7	22	6	1	4.5	3.5	M3	0.7
MJC-20	20	10	30	8	1	7	5	M3	0.7
MJC-30	30	11	35	10	1.5	11	5.5	M4	1.7
MJC-40	40	25	66	12	2	18	12.5	M5	4
MJC-55	55	30	78	14	2	27.5	15	M6	7
MJC-65	65	35	90	15	2.5	31	17.5	M8	15
MJC-80	80	45	114	18	3	37	22.5	M8	15
MJC-95	95	50	126	20	3	45.5	25	M8	15

\*1: 在使用时请一定留出C尺寸。

型号	标准轴孔径 (尺寸容许偏差 H8)																																		
	D1 · D2	3	4	4.5	5	6	6.35	7	8	9.525	10	11	12	14	15	16	18	19	20	22	24	25	28	30	32	35	38	40	42	45	48	50	55		
MJC-14	●	●	●	●	●	●	●	●	●	●	●	●	●	●	●	●	●	●	●	●	●	●	●	●	●	●	●	●	●	●	●	●	●		
MJC-20	●	●	●	●	●	●	●	●	●	●	●	●	●	●	●	●	●	●	●	●	●	●	●	●	●	●	●	●	●	●	●	●	●		
MJC-30	●	●	●	●	●	●	●	●	●	●	●	●	●	●	●	●	●	●	●	●	●	●	●	●	●	●	●	●	●	●	●	●	●	●	
MJC-40	●	●	●	●	●	●	●	●	●	●	●	●	●	●	●	●	●	●	●	●	●	●	●	●	●	●	●	●	●	●	●	●	●	●	
MJC-55	●	●	●	●	●	●	●	●	●	●	●	●	●	●	●	●	●	●	●	●	●	●	●	●	●	●	●	●	●	●	●	●	●	●	
MJC-65	●	●	●	●	●	●	●	●	●	●	●	●	●	●	●	●	●	●	●	●	●	●	●	●	●	●	●	●	●	●	●	●	●	●	●
MJC-80	●	●	●	●	●	●	●	●	●	●	●	●	●	●	●	●	●	●	●	●	●	●	●	●	●	●	●	●	●	●	●	●	●	●	●
MJC-95	●	●	●	●	●	●	●	●	●	●	●	●	●	●	●	●	●	●	●	●	●	●	●	●	●	●	●	●	●	●	●	●	●	●	●

型号	标准轴孔径 (尺寸容许偏差 H7)																						
	D1 · D2	1/8	3/16	1/4	5/16	3/8	7/16	1/2	9/16	5/8	11/16	3/4	13/16	7/8	15/16	1	1 1/8	1 1/4	1 3/8	1 1/2	1 5/8	1 3/4	
MJC-14	●	●	●	●	●	●	●	●	●	●	●	●	●	●	●	●	●	●	●	●	●	●	●
MJC-20	●	●	●	●	●	●	●	●	●	●	●	●	●	●	●	●	●	●	●	●	●	●	●
MJC-30	●	●	●	●	●	●	●	●	●	●	●	●	●	●	●	●	●	●	●	●	●	●	●
MJC-40	●	●	●	●	●	●	●	●	●	●	●	●	●	●	●	●	●	●	●	●	●	●	●
MJC-55	●	●	●	●	●	●	●	●	●	●	●	●	●	●	●	●	●	●	●	●	●	●	●
MJC-65	●	●	●	●	●	●	●	●	●	●	●	●	●	●	●	●	●	●	●	●	●	●	●
MJC-80	●	●	●	●	●	●	●	●	●	●	●	●	●	●	●	●	●	●	●	●	●	●	●
MJC-95	●	●	●	●	●	●	●	●	●	●	●	●	●	●	●	●	●	●	●	●	●	●	●

- 所有产品均带内六角止动螺丝。
- 轴孔径为 φ4 以下时, 附带 1 个止动螺丝。
- 适用轴径的推荐尺寸公差为 h6 及 h7。
- 也承接 1 个轴套是定位螺丝固定型, 另 1 个轴套是夹紧型等组合的订货。

## 性能

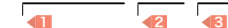
型号	弹性间隔体		最大轴孔径 (mm)	额定*1 扭矩 (N·m)	最大*1 扭矩 (N·m)	零背隙*3 容许传递扭矩 (N·m)	最高转速 (min <sup>-1</sup> )	惯性*2 力矩 (kg·m <sup>2</sup> )	静态扭转刚性 (N·m/rad)	容许偏心 (mm)	容许偏角 (°)	容许轴向偏差 (mm)	质量*2 (g)	弹性间隔体硬度 (JIS)
	紧固型	简易装拆型												
MJC-14	BL	EBL	7	0.7	1.4	0.1	45000	2.0 × 10 <sup>-7</sup>	8	0.15	1	+0.6 0	6.6	A80
MJC-20	BL	EBL	11	1.8	3.6	0.2	31000	1.1 × 10 <sup>-6</sup>	16	0.2	1	+0.8 0	17	
MJC-30	BL	EBL	16	4	8	0.5	21000	6.2 × 10 <sup>-6</sup>	46	0.2	1	+1.0 0	44	
MJC-40	BL	EBL	25	4.9	9.8	1.2	15000	3.7 × 10 <sup>-5</sup>	380	0.15	1	+1.2 0	130	
MJC-55	BL	EBL	32	17	34		11000	1.6 × 10 <sup>-4</sup>	1400	0.2	1	+1.4 0	320	
MJC-65	BL	EBL	38.1	46	92		9000	3.6 × 10 <sup>-4</sup>	2800	0.2	1	+1.5 0	520	
MJC-80	BL	EBL	45	95	190		7000	1.1 × 10 <sup>-3</sup>	3200	0.2	1	+1.8 0	1000	
MJC-95	BL	EBL	55	130	260		6000	2.3 × 10 <sup>-3</sup>	3600	0.2	1	+2.0 0	1500	
MJC-14	WH	EWH	7	1.2	2.4	0.1	45000	2.0 × 10 <sup>-7</sup>	14	0.1	1	+0.6 0	6.6	
MJC-20	WH	EWH	11	3	6	0.2	31000	1.1 × 10 <sup>-6</sup>	29	0.15	1	+0.8 0	17	
MJC-30	WH	EWH	16	7.5	15	0.5	21000	6.2 × 10 <sup>-6</sup>	73	0.15	1	+1.0 0	44	
MJC-40	WH	EWH	25	10	20	1.2	15000	3.7 × 10 <sup>-5</sup>	570	0.1	1	+1.2 0	130	
MJC-55	WH	EWH	32	35	70		11000	1.6 × 10 <sup>-4</sup>	1600	0.15	1	+1.4 0	320	
MJC-65	WH	EWH	38.1	95	190		9000	3.6 × 10 <sup>-4</sup>	3000	0.15	1	+1.5 0	520	
MJC-80	WH	EWH	45	190	380		7000	1.1 × 10 <sup>-3</sup>	5300	0.15	1	+1.8 0	1000	
MJC-95	WH	EWH	55	265	530		6000	2.3 × 10 <sup>-3</sup>	6200	0.15	1	+2.0 0	1500	
MJC-14	RD	ERD	7	2	4	0.1	45000	2.0 × 10 <sup>-7</sup>	22	0.1	1	+0.6 0	6.6	A98
MJC-20	RD	ERD	11	5	10	0.2	31000	1.1 × 10 <sup>-6</sup>	55	0.1	1	+0.8 0	17	
MJC-30	RD	ERD	16	12.5	25	0.5	21000	6.2 × 10 <sup>-6</sup>	130	0.1	1	+1.0 0	44	
MJC-40	RD	ERD	25	17	34	1.2	15000	3.7 × 10 <sup>-5</sup>	1200	0.1	1	+1.2 0	130	
MJC-55	RD	ERD	32	60	120		11000	1.6 × 10 <sup>-4</sup>	2600	0.1	1	+1.4 0	320	
MJC-65	RD	ERD	38.1	160	320		9000	3.6 × 10 <sup>-4</sup>	4900	0.1	1	+1.5 0	520	
MJC-80	RD	ERD	45	325	650		7000	1.1 × 10 <sup>-3</sup>	6500	0.1	1	+1.8 0	1000	
MJC-95	RD	ERD	55	450	900		6000	2.3 × 10 <sup>-3</sup>	8900	0.1	1	+2.0 0	1500	
MJC-14	GR	EGR	7	2.4	4.8	0.1	45000	2.0 × 10 <sup>-7</sup>	66	0.08	1	+0.6 0	6.6	
MJC-20	GR	EGR	11	6	12	0.2	31000	1.1 × 10 <sup>-6</sup>	87	0.08	1	+0.8 0	17	
MJC-30	GR	EGR	16	16	32	0.5	21000	6.2 × 10 <sup>-6</sup>	200	0.08	1	+1.0 0	44	
MJC-40	GR	EGR	25	21	42	1.2	15000	3.7 × 10 <sup>-5</sup>	3000	0.08	1	+1.2 0	130	
MJC-55	GR	EGR	32	75	150		11000	1.6 × 10 <sup>-4</sup>	9000	0.08	1	+1.4 0	320	
MJC-65	GR	EGR	38.1	200	400		9000	3.6 × 10 <sup>-4</sup>	13000	0.08	1	+1.5 0	520	
MJC-80	GR	EGR	45	405	810		7000	1.1 × 10 <sup>-3</sup>	14000	0.08	1	+1.8 0	1000	
MJC-95	GR	EGR	55	560	1120		6000	2.3 × 10 <sup>-3</sup>	15000	0.08	1	+2.0 0	1500	

\*1: 无需根据负荷变化修正额定扭矩和最大扭矩。但环境温度高于 30°C 时, 请依据表中的温度修正系数调整额定扭矩及最大扭矩。[MJC] 的可使用温度为 -20°C ~ 60°C。详情请参考选型步骤。

- \*2: 最大扭矩径时的值。
- \*3: 传递零背隙扭矩时, 请使用紧固型弹性间隔体。

### ● 型号指定

**MJC-95-EBL-40-45**

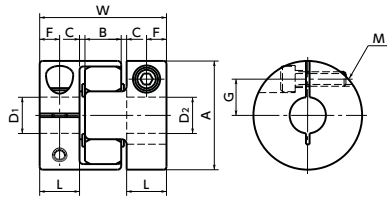


轴孔·键槽加工 → P.952 | 无尘洗净·无尘包装 → P.956 | 变更为不锈钢螺丝 → P.954

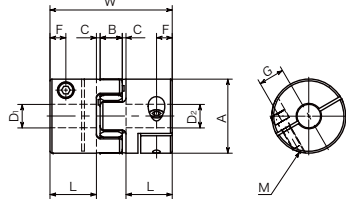
# MJC-CS 挠性联轴器 - 梅花型 - 夹紧型

规格增加 型号变更 规格变更

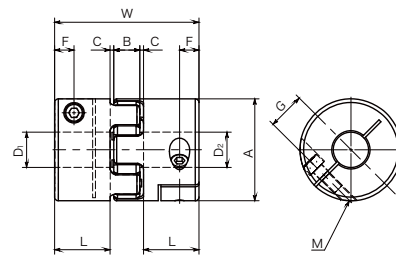
WEB 选型指南 CAD Download 高扭矩 减振 电绝缘性



外径 φ 14-φ 30

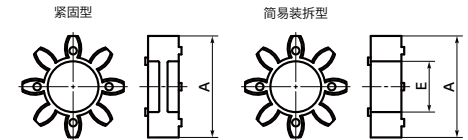


外径: φ 40



外径: φ 55 - φ 95

### 弹性间隔体详图



### 环境温度、温度修正系数

环境温度	温度修正系数
-20°C~30°C	1.00
30°C~40°C	0.80
40°C~60°C	0.70

## 尺寸

型号	轴孔径	A	L	W	B	C*1	弹性间隔体 E	F	G	M	螺栓紧固扭矩 (N·m)
MJC-14CS	3 - 5	14	7	22	6	1	4.5	3.5	4	M2	0.5
	6 - 7									5	M1.6
MJC-20CS	4 - 8	20	10	30	8	1	7	5	6.5	M2.5	1
	9.525 - 11									7.5	M2
MJC-30CS	6 - 12	30	11	35	10	1.5	11	5.5	10	M4	3.5
	12.7 - 16									11	M3
MJC-40CS	7.9375 - 20	40	25	66	12	2	18	8.5	14	M5	8
	22 - 25									15.75	M4
MJC-55CS	9.525 - 28	55	30	78	14	2	27.5	10.5	20	M6	13
	30 - 32									21	M5
MJC-65CS	12.7 - 32	65	35	90	15	2.5	31	13	24	M8	28
	34.925 - 38.1									25	M6
MJC-80CS	19.05 - 42	80	45	114	18	3	37	15	30	M8	28
	45										
MJC-95CS	25 - 48	95	50	126	20	3	45.5	18	34	M10	55
	50 - 55										

\* 1: 在使用时请一定留出C尺寸。

型号	标准轴孔径 D1 · D2																															
	3	4	4.5	5	6	6.35	7	8	9.525	10	11	12	14	15	16	18	19	20	22	24	25	28	30	32	35	38	40	42	45	48	50	55
MJC-14CS	●	●	●	●	●	●	●	●																								
MJC-20CS	●	●	●	●	●	●	●	●	●	●	●	●	●	●	●	●	●	●	●	●	●	●	●	●	●	●	●	●	●	●	●	
MJC-30CS							●	●	●	●	●	●	●	●	●	●	●	●	●	●	●	●	●	●	●	●	●	●	●	●	●	
MJC-40CS								●	●	●	●	●	●	●	●	●	●	●	●	●	●	●	●	●	●	●	●	●	●	●	●	●
MJC-55CS									●	●	●	●	●	●	●	●	●	●	●	●	●	●	●	●	●	●	●	●	●	●	●	●
MJC-65CS										●	●	●	●	●	●	●	●	●	●	●	●	●	●	●	●	●	●	●	●	●	●	●
MJC-80CS											●	●	●	●	●	●	●	●	●	●	●	●	●	●	●	●	●	●	●	●	●	●
MJC-95CS												●	●	●	●	●	●	●	●	●	●	●	●	●	●	●	●	●	●	●	●	●

型号	标准轴孔径 D1 · D2																															
	1/8	3/16	1/4	5/16	3/8	7/16	1/2	9/16	5/8	11/16	3/4	13/16	7/8	15/16	1	1 1/8	1 1/4	1 3/8	1 1/2	1 5/8	1 3/4											
MJC-14CS	●	●	●	●	●	●	●	●	●	●	●	●	●	●	●	●	●	●	●	●	●	●	●	●	●	●	●	●	●	●	●	
MJC-20CS		●	●	●	●	●	●	●	●	●	●	●	●	●	●	●	●	●	●	●	●	●	●	●	●	●	●	●	●	●	●	●
MJC-30CS			●	●	●	●	●	●	●	●	●	●	●	●	●	●	●	●	●	●	●	●	●	●	●	●	●	●	●	●	●	●
MJC-40CS				●	●	●	●	●	●	●	●	●	●	●	●	●	●	●	●	●	●	●	●	●	●	●	●	●	●	●	●	●
MJC-55CS					●	●	●	●	●	●	●	●	●	●	●	●	●	●	●	●	●	●	●	●	●	●	●	●	●	●	●	●
MJC-65CS						●	●	●	●	●	●	●	●	●	●	●	●	●	●	●	●	●	●	●	●	●	●	●	●	●	●	●
MJC-80CS							●	●	●	●	●	●	●	●	●	●	●	●	●	●	●	●	●	●	●	●	●	●	●	●	●	●
MJC-95CS								●	●	●	●	●	●	●	●	●	●	●	●	●	●	●	●	●	●	●	●	●	●	●	●	●

- 所有产品均附带内六角螺栓。
- 适用轴径的推荐尺寸容许偏差为h6及h7。
- 也承接1个轴套是夹紧型、另1个轴套是定位螺丝固定型等组合的订货。
- 安装到D型切口轴时，请注意轴的D型切口面的位置。→ P.284

轴孔·键槽追加加工 → P.952    无尘洗净·无尘包装 → P.956    变更为不锈钢螺丝 → P.954

## 性能

型号	弹性间隔体		最大轴孔径 (mm)	额定*1 扭矩 (N·m)	最大*1 扭矩 (N·m)	零背隙*3 容许传递扭矩 (N·m)	最高转速 (min <sup>-1</sup> )	惯性*2 力矩 (kg·m <sup>2</sup> )	静态扭转刚性 (N·m/rad)	容许偏心 (°)	容许偏角 (°)	容许轴向偏差 (mm)	质量*2 (g)	弹性间隔体硬度 (JIS)
	紧固型	简易拆型												
MJC-14CS	BL	EBL	7	0.7	1.4	0.1	45000	1.9 x 10 <sup>-7</sup>	8	0.15	1	+0.6 0	6.2	A80
MJC-20CS	BL	EBL	11	1.8	3.6	0.2	31000	1.0 x 10 <sup>-6</sup>	16	0.2	1	+0.8 0	16	
MJC-30CS	BL	EBL	16	4	8	0.5	21000	6.0 x 10 <sup>-6</sup>	46	0.2	1	+1.0 0	42	
MJC-40CS	BL	EBL	25	4.9	9.8	1.2	15000	3.6 x 10 <sup>-5</sup>	380	0.15	1	+1.2 0	130	
MJC-55CS	BL	EBL	32	17	34		11000	1.6 x 10 <sup>-4</sup>	1400	0.2	1	+1.4 0	310	
MJC-65CS	BL	EBL	38.1	46	92		9000	3.5 x 10 <sup>-4</sup>	2800	0.2	1	+1.5 0	500	
MJC-80CS	BL	EBL	45	95	190		7000	1.0 x 10 <sup>-3</sup>	3200	0.2	1	+1.8 0	1000	
MJC-95CS	BL	EBL	55	130	260		6000	2.3 x 10 <sup>-3</sup>	3600	0.2	1	+2.0 0	1600	
MJC-14CS	WH	EWL	7	1.2	2.4	0.1	45000	1.9 x 10 <sup>-7</sup>	14	0.1	1	+0.6 0	6.2	
MJC-20CS	WH	EWL	11	3	6	0.2	31000	1.0 x 10 <sup>-6</sup>	29	0.15	1	+0.8 0	16	
MJC-30CS	WH	EWL	16	7.5	15	0.5	21000	6.0 x 10 <sup>-6</sup>	73	0.15	1	+1.0 0	42	
MJC-40CS	WH	EWL	25	10	20	1.2	15000	3.6 x 10 <sup>-5</sup>	570	0.1	1	+1.2 0	130	
MJC-55CS	WH	EWL	32	35	70		11000	1.6 x 10 <sup>-4</sup>	1600	0.15	1	+1.4 0	310	
MJC-65CS	WH	EWL	38.1	95	190		9000	3.5 x 10 <sup>-4</sup>	3000	0.15	1	+1.5 0	500	
MJC-80CS	WH	EWL	45	190	380		7000	1.0 x 10 <sup>-3</sup>	5300	0.15	1	+1.8 0	1000	
MJC-95CS	WH	EWL	55	265	530		6000	2.3 x 10 <sup>-3</sup>	6200	0.15	1	+2.0 0	1600	
MJC-14CS	RD	ERD	7	2	4	0.1	45000	1.9 x 10 <sup>-7</sup>	22	0.1	1	+0.6 0	6.2	A98
MJC-20CS	RD	ERD	11	5	10	0.2	31000	1.0 x 10 <sup>-6</sup>	55	0.1	1	+0.8 0	16	
MJC-30CS	RD	ERD	16	12.5	25	0.5	21000	6.0 x 10 <sup>-6</sup>	130	0.1	1	+1.0 0	42	
MJC-40CS	RD	ERD	25	17	34	1.2	15000	3.6 x 10 <sup>-5</sup>	1200	0.1	1	+1.2 0	130	
MJC-55CS	RD	ERD	32	60	120		11000	1.6 x 10 <sup>-4</sup>	2600	0.1	1	+1.4 0	310	
MJC-65CS	RD	ERD	38.1	160	320		9000	3.5 x 10 <sup>-4</sup>	4900	0.1	1	+1.5 0	500	
MJC-80CS	RD	ERD	45	325	650		7000	1.0 x 10 <sup>-3</sup>	6500	0.1	1	+1.8 0	1000	
MJC-95CS	RD	ERD	55	450	900		6000	2.3 x 10 <sup>-3</sup>	8900	0.1	1	+2.0 0	1600	
MJC-14CS	GR	EGR	7	2.4	4.8	0.1	45000	1.9 x 10 <sup>-7</sup>	66	0.08	1	+0.6 0	6.2	
MJC-20CS	GR	EGR	11	6	12	0.2	31000	1.0 x 10 <sup>-6</sup>	87	0.08	1	+0.8 0	16	
MJC-30CS	GR	EGR	16	16	32	0.5	21000	6.0 x 10 <sup>-6</sup>	200	0.08	1	+1.0 0	42	
MJC-40CS	GR	EGR	25	21	42	1.2	15000	3.6 x 10 <sup>-5</sup>	3000	0.08	1	+1.2 0	130	
MJC-55CS	GR	EGR	32	75	150		11000	1.6 x 10 <sup>-4</sup>	9000	0.08	1	+1.4 0	310	
MJC-65CS	GR	EGR	38.1	200	400		9000	3.5 x 10 <sup>-4</sup>	13000	0.08	1	+1.5 0	500	
MJC-80CS	GR	EGR	45	405	810		7000	1.0 x 10 <sup>-3</sup>	14000	0.08	1	+1.8 0	1000	
MJC-95CS	GR	EGR	55	560	1120		6000	2.3 x 10 <sup>-3</sup>	15000	0.08	1	+2.0 0	1600	

\* 1: 无需根据负荷变化修正额定扭矩和最大扭矩。但环境温度高于30°C时，请依据表中的温度修正系数调整额定扭矩及最大扭矩。MJC-CS的可温度为-20°C~60°C。

\* 2: 最大轴孔径时的值。

\* 3: 传递零背隙扭矩时，请使用紧固型弹性间隔体。

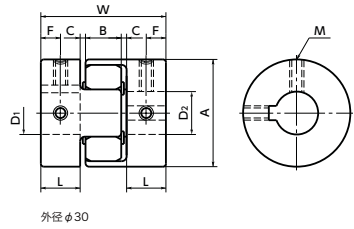
### 型号指定

MJC-30CS-GR-7-8

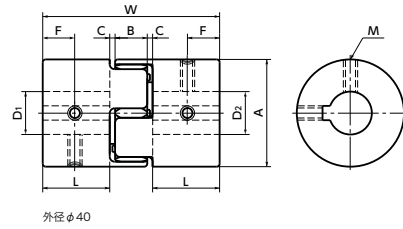


# MJC-K 挠性联轴器 - 梅花型 - 定位螺丝固定型 + 键槽型

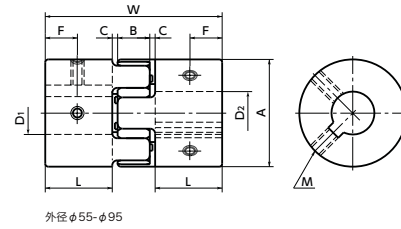
选型指南 CAD Download 高扭矩 减振 电绝缘性



外径 φ30

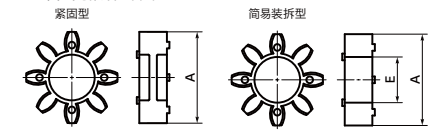


外径 φ40



外径 φ55-φ95

### ● 弹性间隔体详图



### ● 环境温度、温度修正系数

环境温度	温度修正系数
-20°C~30°C	1.00
30°C~40°C	0.80
40°C~60°C	0.70

## 尺寸

单位: mm

型号	A	L	W	B	C*1	弹性间隔体 E	F	M	螺丝紧固扭矩 (N·m)
MJC-30K	30	11	35	10	1.5	11	5.5	M4	1.7
MJC-40K	40	25	66	12	2	18	12.5	M5	4
MJC-55K	55	30	78	14	2	27.5	15	M6	7
MJC-65K	65	35	90	15	2.5	31	17.5	M8	15
MJC-80K	80	45	114	18	3	37	22.5	M8	15
MJC-95K	95	50	126	20	3	45.5	25	M8	15

\*1: 在使用时请一定留出C尺寸。

型号	标准轴孔径 (尺寸容许偏差H8)																							
	10	11	12	14	15	16	18	19	20	22	24	25	28	30	32	35	38	40	42	45	48	50	55	
MJC-30K	●	●	●	●	●	●																		
MJC-40K	●	●	●	●	●	●	●	●	●	●	●	●	●	●	●	●	●	●	●	●	●	●	●	●
MJC-55K	●	●	●	●	●	●	●	●	●	●	●	●	●	●	●	●	●	●	●	●	●	●	●	●
MJC-65K				●	●	●	●	●	●	●	●	●	●	●	●	●	●	●	●	●	●	●	●	●
MJC-80K						●	●	●	●	●	●	●	●	●	●	●	●	●	●	●	●	●	●	●
MJC-95K							●	●	●	●	●	●	●	●	●	●	●	●	●	●	●	●	●	●

型号	标准轴孔径 (尺寸容许偏差H7)														
	1/2	9/16	5/8	11/16	3/4	13/16	7/8	15/16	1	1 1/8	1 1/4	1 3/8	1 1/2	1 5/8	1 3/4
MJC-30K	●	●	●												
MJC-40K	●	●	●	●	●										
MJC-55K	●	●	●	●	●	●	●	●	●	●	●	●	●	●	●
MJC-65K	●	●	●	●	●	●	●	●	●	●	●	●	●	●	●
MJC-80K				●	●	●	●	●	●	●	●	●	●	●	●
MJC-95K					●	●	●	●	●	●	●	●	●	●	●

- 所有产品均附带内六角止动螺丝。
- 适用轴径的推荐尺寸公差为h6及h7。
- 也承接1个轴套是键槽型,另1个轴套是夹紧型等组合的订货。

## 性能

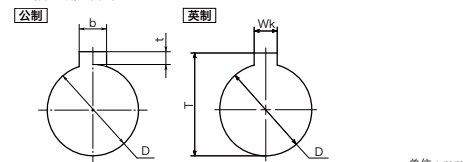
型号	弹性间隔体		最大轴孔径 (mm)	额定*1 扭矩 (N·m)	最大*1 扭矩 (N·m)	零背隙*3 容许传递扭矩 (N·m)	最高转速 (min <sup>-1</sup> )	惯性*2 力矩 (kg·m <sup>2</sup> )	静态扭转刚性 (N·m/rad)	容许偏心 (mm)	容许倾角 (°)	轴向轴间偏差 (mm)	质量*2 (g)	弹性间隔体硬度 (JIS)
	紧固型	简易装拆型												
MJC-30K	BL	EBL	16	4	8	0.5	21000	6.1 × 10 <sup>-6</sup>	46	0.2	1	+1.0 0	43	A80
MJC-40K	BL	EBL	25	4.9	9.8	1.2	15000	3.6 × 10 <sup>-5</sup>	380	0.15	1	+1.2 0	130	
MJC-55K	BL	EBL	32	17	34		11000	1.6 × 10 <sup>-4</sup>	1400	0.2	1	+1.4 0	310	
MJC-65K	BL	EBL	38.1	46	92		9000	3.6 × 10 <sup>-4</sup>	2800	0.2	1	+1.5 0	510	
MJC-80K	BL	EBL	45	95	190		7000	1.1 × 10 <sup>-3</sup>	3200	0.2	1	+1.8 0	1000	
MJC-95K	BL	EBL	55	130	260		6000	2.3 × 10 <sup>-3</sup>	3600	0.2	1	+2.0 0	1500	A92
MJC-30K	WH	EWH	16	7.5	15	0.5	21000	6.1 × 10 <sup>-6</sup>	73	0.15	1	+1.0 0	43	
MJC-40K	WH	EWH	25	10	20	1.2	15000	3.6 × 10 <sup>-5</sup>	570	0.1	1	+1.2 0	130	
MJC-55K	WH	EWH	32	35	70		11000	1.6 × 10 <sup>-4</sup>	1600	0.15	1	+1.4 0	310	
MJC-65K	WH	EWH	38.1	95	190		9000	3.6 × 10 <sup>-4</sup>	3000	0.15	1	+1.5 0	510	
MJC-80K	WH	EWH	45	190	380		7000	1.1 × 10 <sup>-3</sup>	5300	0.15	1	+1.8 0	1000	A98
MJC-95K	WH	EWH	55	265	530		6000	2.3 × 10 <sup>-3</sup>	6200	0.15	1	+2.0 0	1500	
MJC-30K	RD	ERD	16	12.5	25	0.5	21000	6.1 × 10 <sup>-6</sup>	130	0.1	1	+1.0 0	43	
MJC-40K	RD	ERD	25	17	34	1.2	15000	3.6 × 10 <sup>-5</sup>	1200	0.1	1	+1.2 0	130	
MJC-55K	RD	ERD	32	60	120		11000	1.6 × 10 <sup>-4</sup>	2600	0.1	1	+1.4 0	310	
MJC-65K	RD	ERD	38.1	160	320		9000	3.6 × 10 <sup>-4</sup>	4900	0.1	1	+1.5 0	510	D64
MJC-80K	RD	ERD	45	325	650		7000	1.1 × 10 <sup>-3</sup>	6500	0.1	1	+1.8 0	1000	
MJC-95K	RD	ERD	55	450	900		6000	2.3 × 10 <sup>-3</sup>	8900	0.1	1	+2.0 0	1500	
MJC-30K	GR	EGR	16	16	32	0.5	21000	6.1 × 10 <sup>-6</sup>	200	0.08	1	+1.0 0	43	
MJC-40K	GR	EGR	25	21	42	1.2	15000	3.6 × 10 <sup>-5</sup>	3000	0.08	1	+1.2 0	130	
MJC-55K	GR	EGR	32	75	150		11000	1.6 × 10 <sup>-4</sup>	9000	0.08	1	+1.4 0	310	D64
MJC-65K	GR	EGR	38.1	200	400		9000	3.6 × 10 <sup>-4</sup>	13000	0.08	1	+1.5 0	510	
MJC-80K	GR	EGR	45	405	810		7000	1.1 × 10 <sup>-3</sup>	14000	0.08	1	+1.8 0	1000	
MJC-95K	GR	EGR	55	560	1120		6000	2.3 × 10 <sup>-3</sup>	15000	0.08	1	+2.0 0	1500	

\*1: 无需根据负荷变化修正额定扭矩和最大扭矩。但环境温度高于30°C时,请依据表中的温度修正系数调整额定扭矩及最大扭矩。**[MJC-K]**的可用温度为-20°C~60°C。详细请参考选型步骤。

\*2: 最大轴孔径的值。

\*3: 传递零背隙扭矩时,请使用紧固型弹性间隔体。

### ● 轴孔部详图



单位: mm

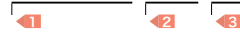
标准公制轴孔径 D	键槽		键	
	基准尺寸	容许偏差 (JS9)	基准尺寸	公称尺寸 b × h
10 · 11 · 12	4	±0.0150	1.8	4 × 4
14 · 15 · 16	5	±0.0150	2.3	5 × 5
18 · 19 · 20 · 22	6	±0.0150	2.8	6 × 6
24 · 25 · 28 · 30	8	±0.0180	3.3	8 × 7
32 · 35 · 38	10	±0.0180	3.3	10 × 8
40 · 42	12	±0.0215	3.3	12 × 8
45 · 48 · 50	14	±0.0215	3.8	14 × 9
55	16	±0.0215	4.3	16 × 10

单位: Inch

标准英制轴孔径 D	键槽		T	
	基准尺寸	容许偏差	基准尺寸	容许偏差
1/2	1/8	+0.002 0	0.560	+0.01 0
9/16	1/8	+0.002 0	0.623	+0.01 0
5/8	3/16	+0.002 0	0.709	+0.01 0
11/16	3/16	+0.002 0	0.773	+0.01 0
3/4	3/16	+0.002 0	0.837	+0.01 0
13/16	3/16	+0.002 0	0.900	+0.01 0
7/8	3/16	+0.002 0	0.964	+0.01 0
15/16	1/4	+0.002 0	1.051	+0.01 0
1	1/4	+0.002 0	1.114	+0.01 0
1 1/8	1/4	+0.002 0	1.241	+0.01 0
1 1/4	1/4	+0.002 0	1.367	+0.01 0
1 3/8	5/16	+0.002 0	1.518	+0.01 0
1 1/2	3/8	+0.002 0	1.669	+0.01 0
1 5/8	3/8	+0.002 0	1.796	+0.01 0
1 3/4	3/8	+0.002 0	1.922	+0.01 0

### ● 型号指定

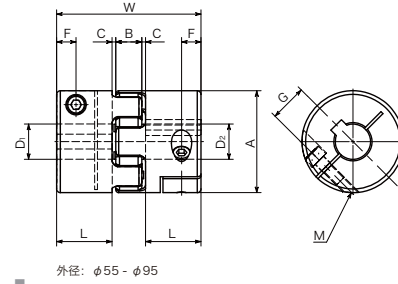
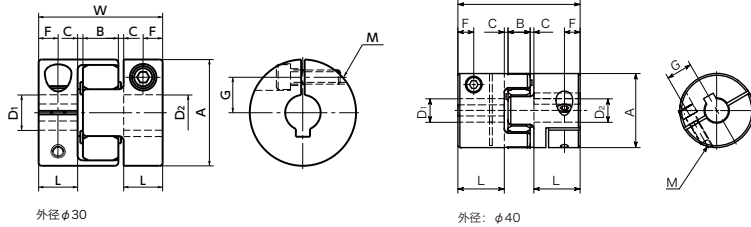
**MJC-40K-EGR-11-12**



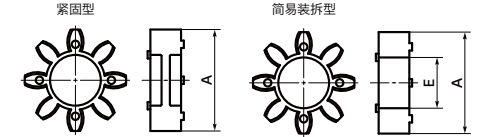
- 轴孔·键槽追加加工 → P.952
- 无尘洗净·无尘包装 → P.956
- 变更不为不锈钢螺丝 → P.954

# MJC-CSK 挠性联轴器 - 梅花型 - 夹紧型+键槽型

WEB 选型指南 CAD Download 高扭矩 减振 电绝缘性



### 弹性间隔体详图



### 环境温度、温度修正系数

环境温度	温度修正系数
-20°C~30°C	1.00
30°C~40°C	0.80
40°C~60°C	0.70

## 尺寸

型号	轴孔径	A	L	W	B	C*1	弹性间隔体 E	F	G	M	螺栓紧固扭矩 (N·m)
MJC-30CSK	10 - 12	30	11	35	10	1.5	11	5.5	10	M4	3.5
	14 - 16								11	M3	1.5
MJC-40CSK	10 - 20	40	25	66	12	2	18	8.5	14	M5	8
	22 - 25								15.75	M4	3.5
MJC-55CSK	10 - 28	55	30	78	14	2	27.5	10.5	20	M6	13
	30 - 32								21	M5	8
MJC-65CSK	12.7 - 32	65	35	90	15	2.5	31	13	24	M8	28
	34.925 - 38.1								25	M6	13
MJC-80CSK	19.05 - 42	80	45	114	18	3	37	15	30	M8	28
	44.45 - 45								31		
MJC-95CSK	25 - 48	95	50	126	20	3	45.5	18	34	M10	55
	50 - 55								36		

\*1: 在使用时请一定留出C尺寸。

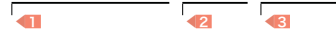
型号	标准轴孔径 D1·D2																						
	10	11	12	14	15	16	18	19	20	22	24	25	28	30	32	35	38	40	42	45	48	50	55
MJC-30CSK	●	●	●	●	●	●	●	●	●	●	●	●	●	●	●	●	●	●	●	●	●	●	●
MJC-40CSK	●	●	●	●	●	●	●	●	●	●	●	●	●	●	●	●	●	●	●	●	●	●	●
MJC-55CSK	●	●	●	●	●	●	●	●	●	●	●	●	●	●	●	●	●	●	●	●	●	●	●
MJC-65CSK	●	●	●	●	●	●	●	●	●	●	●	●	●	●	●	●	●	●	●	●	●	●	●
MJC-80CSK	●	●	●	●	●	●	●	●	●	●	●	●	●	●	●	●	●	●	●	●	●	●	●
MJC-95CSK	●	●	●	●	●	●	●	●	●	●	●	●	●	●	●	●	●	●	●	●	●	●	●

型号	标准轴孔径 D1·D2														
	1/2	9/16	5/8	11/16	3/4	13/16	7/8	15/16	1	1 1/8	1 1/4	1 3/8	1 1/2	1 5/8	1 3/4
MJC-30CSK	●	●	●	●	●	●	●	●	●	●	●	●	●	●	●
MJC-40CSK	●	●	●	●	●	●	●	●	●	●	●	●	●	●	●
MJC-55CSK	●	●	●	●	●	●	●	●	●	●	●	●	●	●	●
MJC-65CSK	●	●	●	●	●	●	●	●	●	●	●	●	●	●	●
MJC-80CSK	●	●	●	●	●	●	●	●	●	●	●	●	●	●	●
MJC-95CSK	●	●	●	●	●	●	●	●	●	●	●	●	●	●	●

- 所有产品均附带内六角螺栓。
- 适用轴径的推荐尺寸容许偏差为h6及h7。
- 也承接1个轴套是夹紧型+键槽型、另1个轴套是夹紧型等组合的订货。
- 安装到D型切口轴时，请注意轴的D型切口面的位置。→ P.284

### 型号指定

MJC-80CSK-EWH-22-24



轴孔·键槽追加加工 → P.952 无尘洗净·无尘包装 → P.956 变更为不锈钢螺丝 → P.954 欢迎洽询 可对应, 费用另计 可对应, 费用另计

## 性能

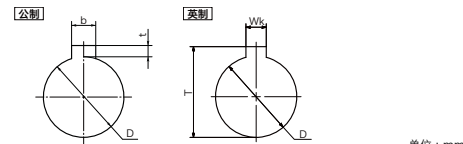
型号	弹性间隔体		最大轴孔径 (mm)	额定*1 扭矩 (N·m)	最大*1 容许传递扭矩 (N·m)	零背隙*3 容许传递扭矩 (N·m)	最高转速 (min <sup>-1</sup> )	惯性*2 力矩 (kg·m <sup>2</sup> )	静态扭转刚性 (N·m/rad)	容许偏心 (mm)	容许偏角 (°)	容许轴向偏差 (mm)	质量*2 (g)	弹性间隔体 硬度 (JIS)
	紧固型	简易拆卸型												
MJC-30CSK	BL	EBL	16	4	8	0.5	21000	5.9 × 10 <sup>-6</sup>	46	0.2	1	+1.0 0	41	A80
MJC-40CSK	BL	EBL	25	4.9	9.8	1.2	15000	3.5 × 10 <sup>-5</sup>	380	0.15	1	+1.2 0	130	
MJC-55CSK	BL	EBL	32	17	34		11000	1.5 × 10 <sup>-4</sup>	1400	0.2	1	+1.4 0	300	
MJC-65CSK	BL	EBL	38.1	46	92		9000	3.5 × 10 <sup>-4</sup>	2800	0.2	1	+1.5 0	490	A92
MJC-80CSK	BL	EBL	45	95	190		7000	1.0 × 10 <sup>-3</sup>	3200	0.2	1	+1.8 0	990	
MJC-95CSK	BL	EBL	55	130	260		6000	2.3 × 10 <sup>-3</sup>	3600	0.2	1	+2.0 0	1500	
MJC-30CSK	WH	EWH	16	7.5	15	0.5	21000	5.9 × 10 <sup>-6</sup>	73	0.15	1	+1.0 0	41	A98
MJC-40CSK	WH	EWH	25	10	20	1.2	15000	3.5 × 10 <sup>-5</sup>	570	0.1	1	+1.2 0	130	
MJC-55CSK	WH	EWH	32	35	70		11000	1.5 × 10 <sup>-4</sup>	1600	0.15	1	+1.4 0	300	
MJC-65CSK	WH	EWH	38.1	95	190		9000	3.5 × 10 <sup>-4</sup>	3000	0.15	1	+1.5 0	490	A98
MJC-80CSK	WH	EWH	45	190	380		7000	1.0 × 10 <sup>-3</sup>	5300	0.15	1	+1.8 0	990	
MJC-95CSK	WH	EWH	55	265	530		6000	2.3 × 10 <sup>-3</sup>	6200	0.15	1	+2.0 0	1500	
MJC-30CSK	RD	ERD	16	12.5	25	0.5	21000	5.9 × 10 <sup>-6</sup>	130	0.1	1	+1.0 0	41	D64
MJC-40CSK	RD	ERD	25	17	34	1.2	15000	3.5 × 10 <sup>-5</sup>	1200	0.1	1	+1.2 0	130	
MJC-55CSK	RD	ERD	32	60	120		11000	1.5 × 10 <sup>-4</sup>	2600	0.1	1	+1.4 0	300	
MJC-65CSK	RD	ERD	38.1	160	320		9000	3.5 × 10 <sup>-4</sup>	4900	0.1	1	+1.5 0	490	D64
MJC-80CSK	RD	ERD	45	325	650		7000	1.0 × 10 <sup>-3</sup>	6500	0.1	1	+1.8 0	990	
MJC-95CSK	RD	ERD	55	450	900		6000	2.3 × 10 <sup>-3</sup>	8900	0.1	1	+2.0 0	1500	
MJC-30CSK	GR	EGR	16	16	32	0.5	21000	5.9 × 10 <sup>-6</sup>	200	0.08	1	+1.0 0	41	D64
MJC-40CSK	GR	EGR	25	21	42	1.2	15000	3.5 × 10 <sup>-5</sup>	3000	0.08	1	+1.2 0	130	
MJC-55CSK	GR	EGR	32	75	150		11000	1.5 × 10 <sup>-4</sup>	9000	0.08	1	+1.4 0	300	
MJC-65CSK	GR	EGR	38.1	200	400		9000	3.5 × 10 <sup>-4</sup>	13000	0.08	1	+1.5 0	490	D64
MJC-80CSK	GR	EGR	45	405	810		7000	1.0 × 10 <sup>-3</sup>	14000	0.08	1	+1.8 0	990	
MJC-95CSK	GR	EGR	55	560	1120		6000	2.3 × 10 <sup>-3</sup>	15000	0.08	1	+2.0 0	1500	

\*1: 无需根据负荷变化修正额定扭矩和最大扭矩。但环境温度高于30°C时, 请依据表中的温度修正系数调整额定扭矩及最大扭矩。MJC-CSK的可温度为-20°C~60°C。

\*2: 最大轴径时的值。

\*3: 传递零背隙扭矩时, 请使用紧固型弹性间隔体。

### 轴孔部详图



标准公制轴孔径 D	键槽		键	
	基准尺寸	容许偏差 (JIS)	基准尺寸	容许偏差
10 · 11 · 12	4	±0.0150	1.8	+0.1 0
14 · 15 · 16	5	±0.0150	2.3	+0.1 0
18 · 19 · 20 · 22	6	±0.0150	2.8	+0.1 0
24 · 25 · 28 · 30	8	±0.0180	3.3	+0.2 0
32 · 35 · 38	10	±0.0180	3.3	+0.2 0
40 · 42	12	±0.0215	3.3	+0.2 0
45 · 48 · 50	14	±0.0215	3.8	+0.2 0
55	16	±0.0215	4.3	+0.2 0

单位: inch

标准英制轴孔径 D	键槽		键	
	基准尺寸	容许偏差	基准尺寸	容许偏差
1/2	1/8	+0.002 0	0.560	+0.01 0
9/16	1/8	+0.002 0	0.623	+0.01 0
5/8	3/16	+0.002 0	0.709	+0.01 0
11/16	3/16	+0.002 0	0.773	+0.01 0
3/4	3/16	+0.002 0	0.837	+0.01 0
13/16	3/16	+0.002 0	0.900	+0.01 0
7/8	3/16	+0.002 0	0.964	+0.01 0
15/16	1/4	+0.002 0	1.051	+0.01 0
1	1/4	+0.002 0	1.114	+0.01 0
1 1/8	1/4	+0.002 0	1.241	+0.01 0
1 1/4	1/4	+0.002 0	1.367	+0.01 0
1 3/8	5/16	+0.002 0	1.518	+0.01 0
1 1/2	3/8	+0.002 0	1.669	+0.01 0
1 5/8	3/8	+0.002 0	1.796	+0.01 0
1 3/4	3/8	+0.002 0	1.922	+0.01 0